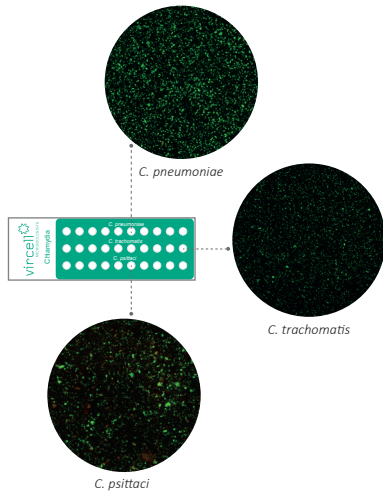




# Immunofluorescence

Infectious Diseases complete panel



## Chlamydia

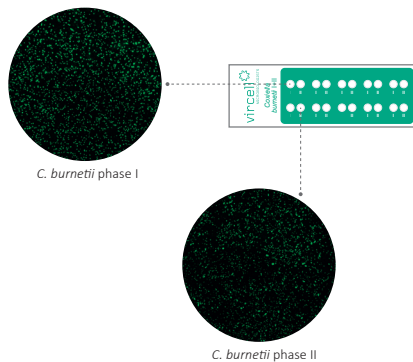
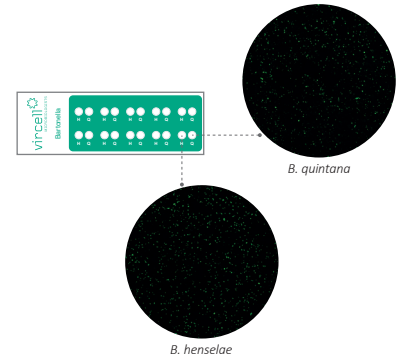
- **Indirect immunofluorescence** test for species-specific detection
- Aid in the differential diagnosis of **3 Chlamydia species** in fully coated separate wells: *C. pneumoniae*, *C. trachomatis*, *C. psittaci*
- **Elementary body antigen** (free from LPS) avoids cross-reactions

Cat. No.	Description	CE Marking	Pack size
PCHPNG	CHLAMYDOPHILA PNEUMONIAE IFA IgG	CE <sub>0318</sub>	100 tests
PCHPNM	CHLAMYDOPHILA PNEUMONIAE IFA IgM	CE <sub>0318</sub>	100 tests
SCHPN	CHLAMYDOPHILA PNEUMONIAE IFA SLIDE	CE <sub>0318</sub>	100 tests

## Bartonella

- **Aide in the differential diagnosis** of *B. henselae* and *B. quintana*
- Fully coated separated wells to **facilitate the reading of results**

Cat. No.	Description	CE Marking	Pack size
PBAHQG	BARTONELLA HENSELAE & QUINTANA IFA IgG	CE <sub>0318</sub>	100 tests
PBAHQM	BARTONELLA HENSELAE & QUINTANA IFA IgM	CE <sub>0318</sub>	100 tests



## Coxiella

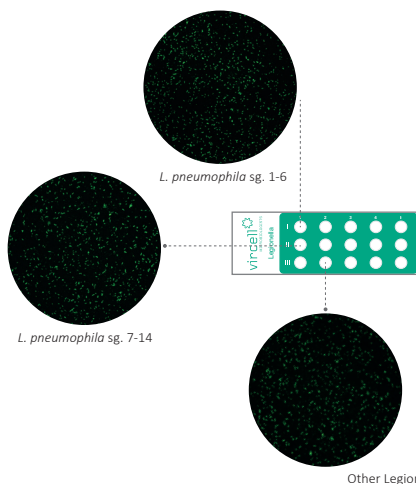
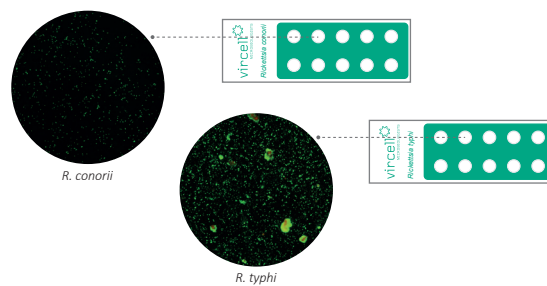
- IFA technique remain the gold standard method for a **differential diagnosis** of acute and chronic disease
- *Coxiella burnetii* **phase I and phase II** antigen in fully coated separate wells to facilitate the reading of results
- **IgG, IgM and IgA conjugates** available

Cat. No.	Description	CE Marking	Pack size
PCOBUG	COXIELLA BURNETII IFA IgG	CE	100 tests
PCOBUM	COXIELLA BURNETII IFA IgM	CE	100 tests
PCOBU I+II	COXIELLA BURNETII I+II IFA IgG/IgM/IgA	CE	100 tests
SCOBU	COXIELLA BURNETII IFA SLIDE	CE	100 tests

## Rickettsia

- **Complete panel** for *Rickettsia typhi* and *Rickettsia conorii* detection
- IFA technique remain the gold standard method for an **early diagnosis without cross-reactions**

Cat. No.	Description	CE Marking	Pack size
PRICOG	RICKETTSIA CONORII IFA IgG	CE	100 tests
PRICOM	RICKETTSIA CONORII IFA IgM	CE	100 tests
SRICO	RICKETTSIA CONORII IFA SLIDE	CE	100 tests
PRITYG	RICKETTSIA TYPHI IFA IgG	CE	100 tests
PRITYM	RICKETTSIA TYPHI IFA IgM	CE	100 tests



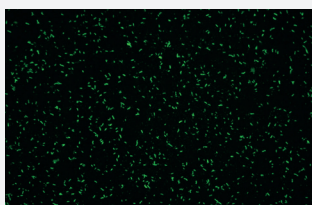
## Legionella

- **Non- filamentous forms antigen** to avoid false positive results
- **Complete panel** of products for detection of LPN serogroup 1, LPN serogroups 1-6 and *Legionella* sp.

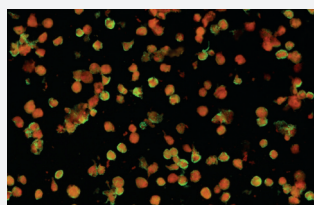
Cat. No.	Description	CE Marking	Pack size
PLEPNG	LEGIONELLA PNEUMOPHILA IFA IgG	CE	100 tests
PLEPNM	LEGIONELLA PNEUMOPHILA IFA IgM	CE	100 tests
PLESXG	LEGIONELLA PNEUMOPHILA SG 1-6 IFA IgG	CE	100 tests
PLESPG	LEGIONELLA SP IFA IgG	CE	100 tests

- Indirect immunofluorescence assay to simultaneously detect antibodies against the main viruses and bacteria causing atypical pneumonia
- MIF assay for more specific results in *C. pneumoniae*
- Easy results reading with fully coated separate wells
- Complete kits including all the necessary reagents to perform the technique

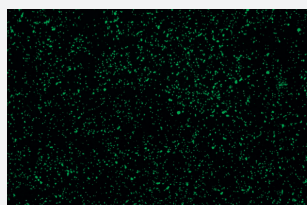
Cat. No.	Description	CE Marking	Pack size
NBACT	PNEUMOBACT <i>L. pneumophila</i> sg 1, <i>M. pneumoniae</i> , <i>C. burnetii</i> , <i>C. pneumoniae</i> and <i>C.psittaci</i>	CE <sub>0318</sub>	20 tests
NSLIDEG	PNEUMOSLIDE IgG <i>L. pneumophila</i> sg 1, <i>M. pneumoniae</i> , <i>C. burnetii</i> , <i>C. pneumoniae</i> , adenovirus, respiratory syncytial virus, influenza A, influenza B, parainfluenza 1, 2 and 3 and cell control	CE <sub>0318</sub>	20 tests
NSLIDEM	PNEUMOSLIDE IgM <i>L. pneumophila</i> sg 1, <i>M. pneumoniae</i> , <i>C. burnetii</i> , <i>C. pneumoniae</i> , adenovirus, respiratory syncytial virus, influenza A, influenza B, parainfluenza 1, 2 and 3 and cell control	CE <sub>0318</sub>	10 tests



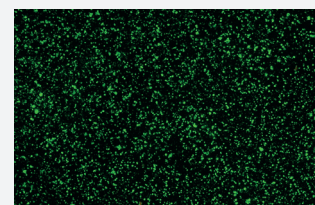
1. *Legionella pneumophila* sg 1



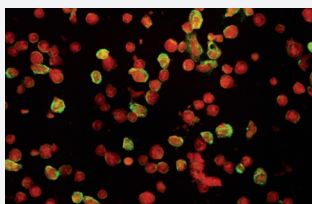
2. *Mycoplasma pneumoniae*



3. *Coxiella burnetii*



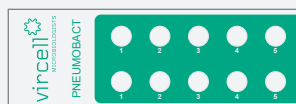
4. *Chlamydomphila pneumoniae*



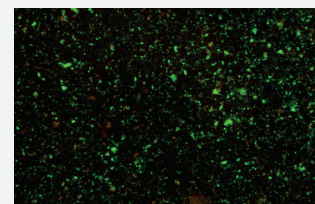
5. Adenovirus (NSLIDE)



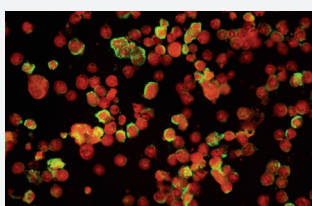
NSLIDEG-PNEUMOSLIDE IgG-20 tests  
NSLIDEM-PNEUMOSLIDE IgM-10 tests



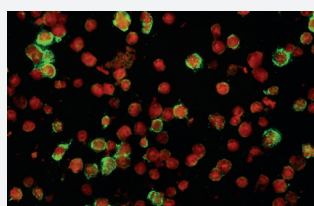
NBACT-PNEUMOBACT-20 tests



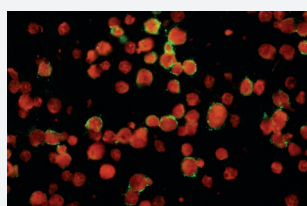
5. *Chlamydomphila psittaci* (NBACT)



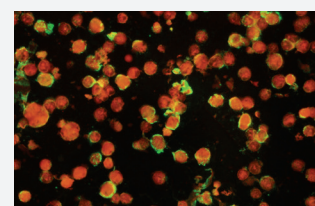
6. Respiratory syncytial virus



7. Influenza A



8. Influenza B



9. Parainfluenza 1, 2 and 3

# Ordering information

## Single Tests

Cat. No.	Description	Class	Pack size
PBAHQG	BARTONELLA HENSELAE & QUINTANA IFA IgG	CE	100 tests
PBAHQM	BARTONELLA HENSELAE & QUINTANA IFA IgM	CE	100 tests
PCHAG	CHAGAS IFA IgG+IgM	CE	100 tests
PCHPNG	CHLAMYDOPHILA PNEUMONIAE IFA IgG	CE <sub>0318</sub>	100 tests
PCHPNM	CHLAMYDOPHILA PNEUMONIAE IFA IgM	CE <sub>0318</sub>	100 tests
SCHPN	CHLAMYDOPHILA PNEUMONIAE IFA SLIDE	CE <sub>0318</sub>	100 tests
PCOBUG	COXIELLA BURNETII IFA IgG	CE	100 tests
PCOBUM	COXIELLA BURNETII IFA IgM	CE	100 tests
PCOBU I+II	COXIELLA BURNETII I+II IFA IgG/IgM/IgA	CE	100 tests
SCOBU	COXIELLA BURNETII IFA SLIDE	CE	100 tests
PCAALG	INVASIVE CANDIDIASIS (CAGTA) IFA IgG	CE	50 tests
PLEPNG	LEGIONELLA PNEUMOPHILA IFA IgG	CE	100 tests
PLEPNM	LEGIONELLA PNEUMOPHILA IFA IgM	CE	100 tests
PLESXG	LEGIONELLA PNEUMOPHILA SG 1-6 IFA IgG	CE	100 tests
PLESPG	LEGIONELLA SP IFA IgG	CE	100 tests
PLEDOG	LEISHMANIA IFA IgG	CE	100 tests
SLEDO	LEISHMANIA IFA SLIDE	CE	100 tests
PMYPNG	MYCOPLASMA PNEUMONIAE IFA IgG	CE	100 tests
PMYPNM	MYCOPLASMA PNEUMONIAE IFA IgM	CE	100 tests
PRICOG	RICKETTSIA CONORII IFA IgG	CE	100 tests
PRICOM	RICKETTSIA CONORII IFA IgM	CE	100 tests
SRICO	RICKETTSIA CONORII IFA SLIDE	CE	100 tests
PRITYG	RICKETTSIA TYPHI IFA IgG	CE	100 tests
PRITYM	RICKETTSIA TYPHI IFA IgM	CE	100 tests

## MultiTests

Cat. No.	Description	Class	Pack size
NBACT	PNEUMOBACT <i>L. pneumophila</i> sg 1, <i>M. pneumoniae</i> , <i>C. burnetii</i> , <i>C. pneumoniae</i> and <i>C.psittaci</i>	CE <sub>0318</sub>	20 tests
NSLIDEG	PNEUMOSLIDE IgG <i>L. pneumophila</i> sg 1, <i>M. pneumoniae</i> , <i>C. burnetii</i> , <i>C. pneumoniae</i> , adenovirus, respiratory syncytial virus, influenza A, influenza B, parainfluenza 1, 2 and 3 and cell control	CE <sub>0318</sub>	20 tests
NSLIDEM	PNEUMOSLIDE IgM <i>L. pneumophila</i> sg 1, <i>M. pneumoniae</i> , <i>C. burnetii</i> , <i>C. pneumoniae</i> , adenovirus, respiratory syncytial virus, influenza A, influenza B, parainfluenza 1, 2 and 3 and cell control	CE <sub>0318</sub>	10 tests

## Other IFA products

Cat. No.	Description	Class	Pack size
S002	IFA SORBENT	CE IVDR	100 tests
S002-100	IFA SORBENT	CE IVDR	4,000 tests

### Vircell, S.L.

Parque Tecnológico de la Salud, Avicena 8 18016 Granada. Spain. Tel. +34 958 441 264  
info@vircell.com [www.vircell.com](http://www.vircell.com)